



## BiP/GRP78 mouse mAb

<b>Catalog No</b>	YP-Ab-03455
<b>Isotype</b>	IgG
<b>Reactivity</b>	Human;Mouse;Rat;Hamster
<b>Applications</b>	WB;IF;IP
<b>Gene Name</b>	hspa5
<b>Protein Name</b>	
<b>Immunogen</b>	Purified recombinant human BiP/GRP78 protein expressed in E.coli.
<b>Specificity</b>	This antibody detects endogenous levels of BiP/GRP78 and does not cross-react with related proteins.
<b>Formulation</b>	Liquid in PBS containing 50% glycerol, 0.5% BSA and 0.02% sodium azide.
<b>Source</b>	Monoclonal, Mouse
<b>Purification</b>	The antibody was affinity-purified from mouse ascites by affinity-chromatography using epitope-specific immunogen.
<b>Dilution</b>	wb 1:1000. IF 1:50-200
<b>Concentration</b>	1 mg/ml
<b>Purity</b>	≥90%
<b>Storage Stability</b>	-20°C/1 year
<b>Synonyms</b>	78 kDa glucose regulated protein;78 kDa glucose-regulated protein;AL022860;AU019543;BIP;D2Wsu141e;D2Wsu17e;Endoplasmic reticulum luminal Ca(2+)-binding protein grp78;Endoplasmic reticulum luminal Ca <sup>2+</sup> binding protein grp78;FLJ26106;Glucose Regulated Protein 78kDa;GRP 78;GRP-78;GRP78;GRP78_HUMAN;Heat shock 70 kDa protein 5;Heat Shock 70kDa Protein 5;Hsce70;HSPA 5;HSPA5;Immunoglobulin Heavy Chain Binding Protein;Immunoglobulin heavy chain-binding protein;mBiP;MIF2;Sez7.
<b>Observed Band</b>	78kD
<b>Cell Pathway</b>	Endoplasmic reticulum lumen . Melanosome . Cytoplasm . Cell surface . Identified by mass spectrometry in melanosome fractions from stage I to stage IV (PubMed:12643545). Localizes to the cell surface of epithelial cells in response to high levels of free iron (PubMed:20484814, PubMed:24355926, PubMed:27159390). .
<b>Tissue Specificity</b>	Articular cartilage,Brain,Cajal-Retzius cell,Cervix carcino
<b>Function</b>	disease:Autoantigen in rheumatoid arthritis [MIM:180300].,function:Probably plays a role in facilitating the assembly of multimeric protein complexes inside the ER.,similarity:Belongs to the heat shock protein 70 family.,subcellular location:Identified by mass spectrometry in melanosome fractions from stage I to



stage IV.,subunit:Interacts with DNAJC1 (via J domain) (By similarity). Component of an EIF2 complex at least composed of CUGBP1, CALR, CALR3, EIF2S1, EIF2S2, HSP90B1 and HSPA5. Part a large chaperone multiprotein complex comprising CABP1, DNAJB11, HSP90B1, HSPA5, HYOU, PDIA2, PDIA4, PPIB, SDF2L1, UGT1A1 and very small amounts of ERP29, but not, or at very low levels, CALR nor CANX. Interacts with TMEM132A.,

**Background**

The protein encoded by this gene is a member of the heat shock protein 70 (HSP70) family. It is localized in the lumen of the endoplasmic reticulum (ER), and is involved in the folding and assembly of proteins in the ER. As this protein interacts with many ER proteins, it may play a key role in monitoring protein transport through the cell.[provided by RefSeq, Sep 2010],

**matters needing attention**

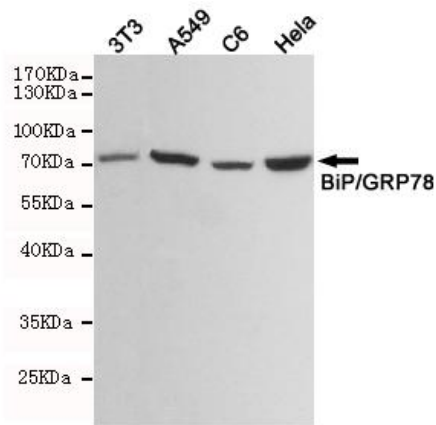
Avoid repeated freezing and thawing!

**Usage suggestions**

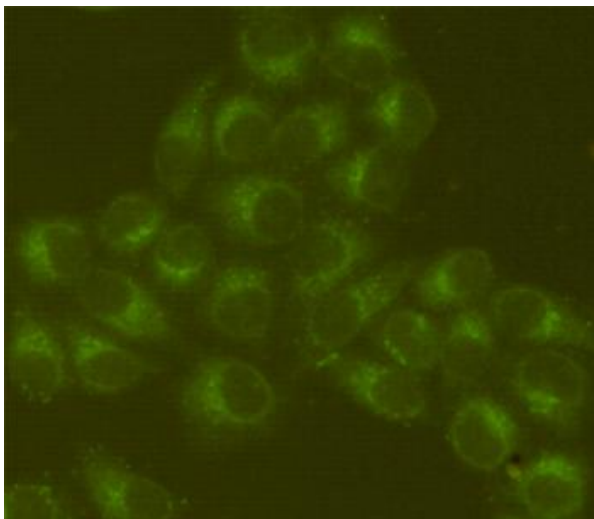
This product can be used in immunological reaction related experiments. For more information, please consult technical personnel.



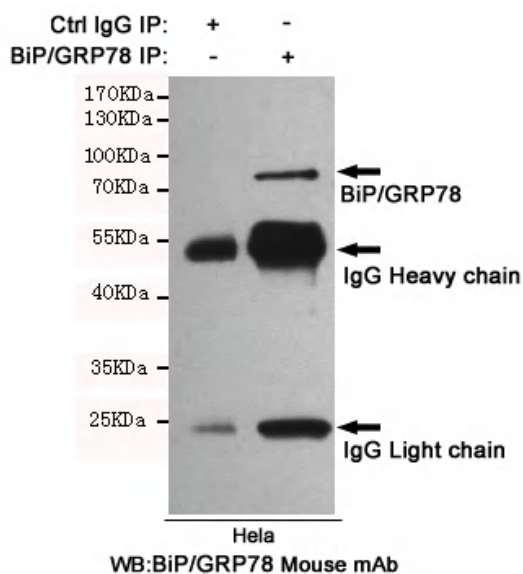
## Products Images



Western blot analysis of extracts from 3T3, A549, C6 and HeLa cell lysates using BiP/GRP78 mouse mAb (1:1000 diluted). Predicted band size: 72KDa. Observed band size: 72KDa.



Immunofluorescent analysis of HeLa cells fixed by anhydrous methanol at -20°C and using BiP/GRP78 mouse mAb (dilution 1:200).



Immunoprecipitation of BiP/GRP78 from HeLa cell extracts using BiP/GRP78 Mouse mAb. Western blot was performed using BiP/GRP78 Mouse mAb.